

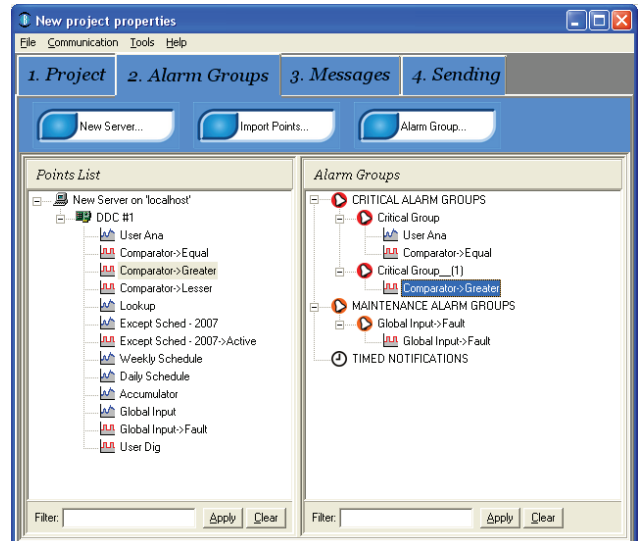
Overview

Facility Manager (FM) is an event driven, real-time Alarm handling package. It provides an intuitive and powerful means of designing, monitoring, and handling alarm groups.

Using a drag-and-drop approach, alarm groups can be easily setup using point values from a number of different devices and networks. Each point has its own activation settings which determine when an alarm group is activated.

Each alarm group is assigned a number of people to contact in the event of activation. These people can be contacted in a variety of ways including e-mail, fax, SMS and printed messages. A scripting language also allows the designer to create new message types to be sent via modem commands.

All Alarm Groups can be acknowledged or disabled by a user via the FM Explorer program.



Specifications

- Distributed on one CD with an electronic security key for software protection
- Is supported by Windows® Vista Business 32-bit & XP Professional 32-bit
- Minimum PC Specifications:
Intel® Pentium® III/500MHz or compatible CPU. 256 megabytes (MB) of RAM. 100 megabytes (MB) of available hard disk space. Video adapter and monitor. CD-ROM or DVD drive. Keyboard and Microsoft® Mouse or compatible pointing device
- Upgrade versions available on request
- Shipped complete with user documentation
- Message types may require a TCP/IP connection, data/fax modem or serial (COM) port.
- Uses *Innotech® iComm Server* to access devices

Facility Manager is available as four separate products:

FM Builder - this enables the designer to create new projects and transfer them to and from the FM Server. Project creation is done using a simple step-by-step process that enables simple or complex projects to be designed easily.

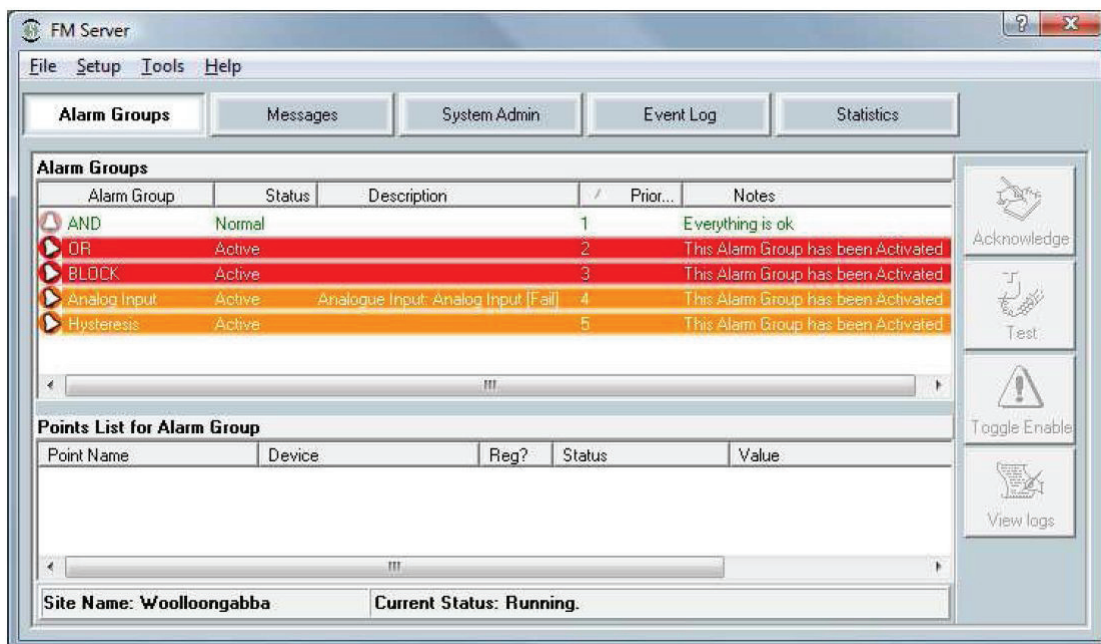
FM Server - is the heart of the system. It is responsible for monitoring points and sending Alarm messages to people when required.

FM Explorer - this is a front-end viewer that allows the current status of Alarm Groups to be checked either remotely or locally. The user can acknowledge that an Alarm Group has been activated showing other users that the problem is being taken care of.

FM Bundle - this is a combination of all three of the above packages.

Features

- Event driven processing strategy for fast, efficient operation
- Real-time operation, as soon as a value of a data point changes, an alarm group can be activated and a message sent
- Seamless integration with existing Genesis and MAXIM products
- Can monitor data points on all Innotech network able products via Net Comms
- Programmed alarms can be monitored via FM Explorer or by other Innotech products including Magellan
- Step-by-step project design with easy drag-and-drop methodology
- Various message types can be sent to any practical number of people
- Alarm Groups can be acknowledged
- Message bank enables messages to be created and stored for use in future projects. These include fax and e-mail layouts etc.
- Predefined words can be added to messages allowing the same message to be sent to various people but still be personalised
- All events can be logged to screen, or File System administrator details can be entered and contacted whenever errors occur. This includes when a device goes off-line, or an alarm recipient could not be contacted.



This page intentionally left blank.

Messages

Messages Explained

The Facility Manager package can send a variety of messages to people. Below is a brief explanation of each of the types.

E-mail:

The FM Server can send e-mails using a SMTP mail server on a LAN or over a dial up connection.

Fax:

Fax documents can be sent via a data/fax modem.

Script:

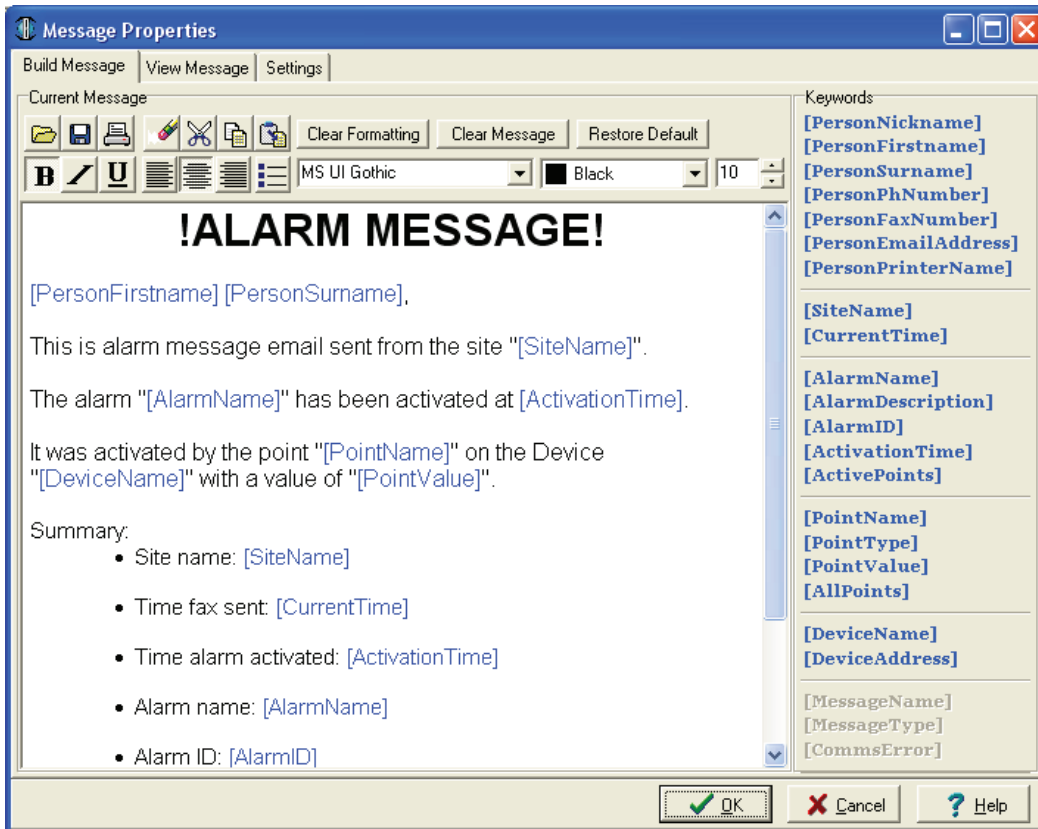
This allows the designers to make their own message types by using a simple scripting language and a modem. For example specific scripts for pager services could be added.

SMS:

An SMS message is sent to a mobile phone using a SMS service provider through a modem.

Print:

Messages can be printed to a user defined printer or default printer.



INNOTECH®
Innovative technology

Australian Owned, Designed & Manufactured
by Mass Electronics Brisbane

Phone: + 61 7 3841 1388 Fax: + 61 7 3841 1644
Email: sales@innotech.com.au www.innotech.com.au

YOUR DISTRIBUTOR