



MAXIM III Simulator

MAXIM Series III Controller Software Simulator

Overview

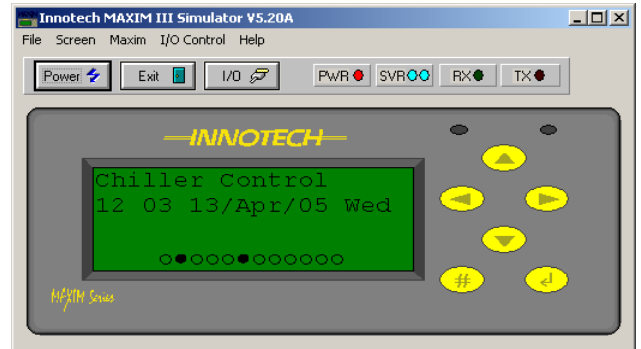
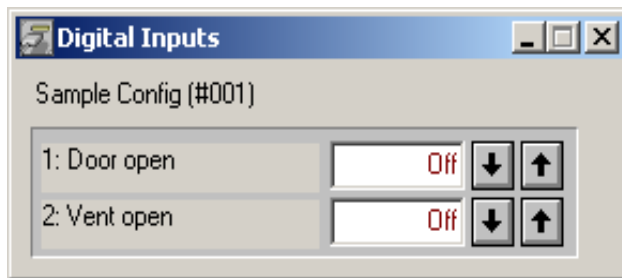
MAXIM III Simulator is a Windows® based software program that simulates an Innotech MAXIM Series III Controller.

The Virtual MAXIM can be powered on, configured and interrogated in the same way as a physical MAXIM. Configurations can be downloaded and checked without requiring any hardware installation.

MAXIM III Simulator can be used in conjunction with any product from the MAXIM Software range.

Applications

- Designing and testing configurations within a Windows environment.
- Training aid for both the use of MAXIM Software and the Human Machine Interface (HMI).



Features

- MAXIM front panel simulation.
- Simulation of MAXIM Series III processing.
- I/O monitoring and control.
- Transparent support for all Innotech MAXIM software packages.
- Easy to use interface - no special training required.

Specifications

- Distributed on one CD as part of the MAXIM Software package.
- Download from the Innotech website:
www.innotech.com.au
- Is supported by Windows Vista Business 32-bit and XP Professional 32-bit.
- Minimum PC specifications:
Intel® Pentium III/500MHz or compatible CPU. 256 megabytes (MB) of RAM. 100 megabytes (MB) of available hard disk space. Video adapter and monitor. CD-ROM or DVD drive. Keyboard and Microsoft® mouse or compatible pointing device.
- Uses *Innotech iComm* to access devices.

This page intentionally left blank.