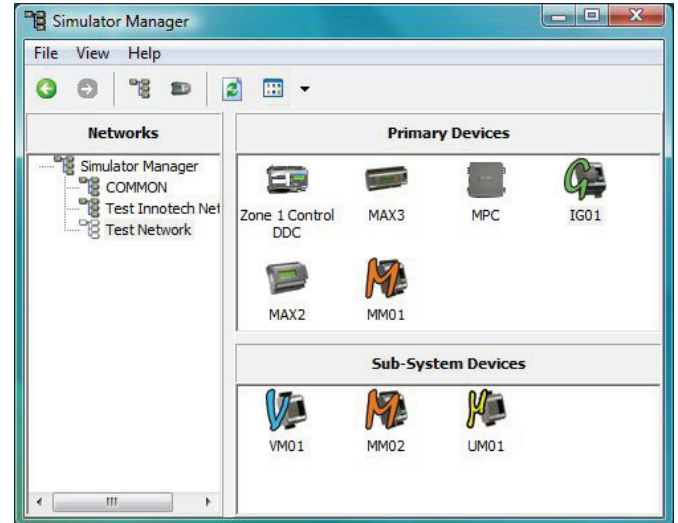


### Overview

*Simulator Manager* is a Windows®-based software program that allows you to easily and quickly create a diverse network of Genesis II or MAXIM series simulators.

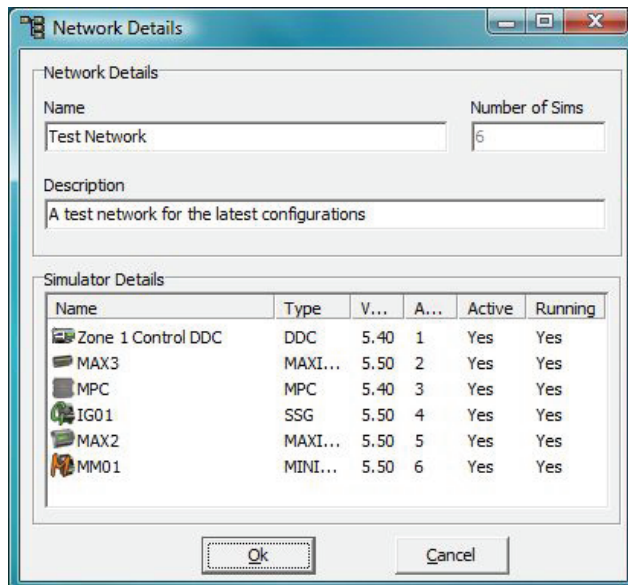
The simulators can be powered on, powered off or started and shutdown from the *Simulator Manager* interface. You can also change the name and address of each simulator.

*Simulator Manager* can be used in conjunction with any product from the Innotech® Software range.



### Applications

- Designing and testing networks of configurations within a Windows environment



### Features

- Simulator network creation and deletion
- Genesis II and MAXIM series simulator creation and deletion
- Simulator state monitoring
- Name and address modification for all simulators
- Easy to use interface - no special training required
- Test Global Network

### Specifications

- Distributed on one CD as part of the MAXIM software package
- Download from the Innotech website: [www.innotech.com.au](http://www.innotech.com.au)
- Is supported by Windows® Vista Business 32-bit & XP Professional 32-bit
- Minimum PC specifications:  
Intel® Pentium® III/500MHz or compatible CPU. 256 megabytes (MB) of RAM. 100 megabytes (MB) of available hard disk space. Video adapter and monitor. CD-ROM or DVD drive. Keyboard and Microsoft® Mouse or compatible pointing device
- Uses *Innotech iComm Server* to access devices

This page intentionally left blank.