



## Gen2 Simulator

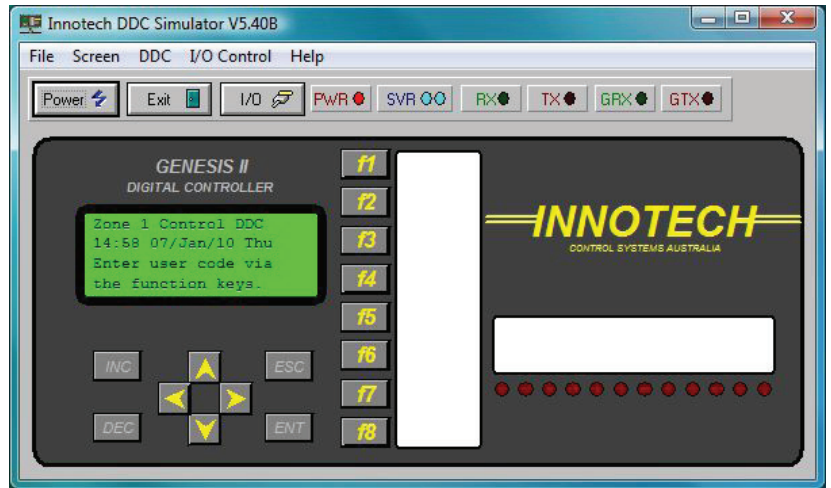
## Genesis II Digital Controller Software Simulator

### Overview

*Gen2 Simulator* is a Windows® based software program that simulates an Innotech® Genesis II Direct Digital Controller, or Genesis II Mid Points Controller.

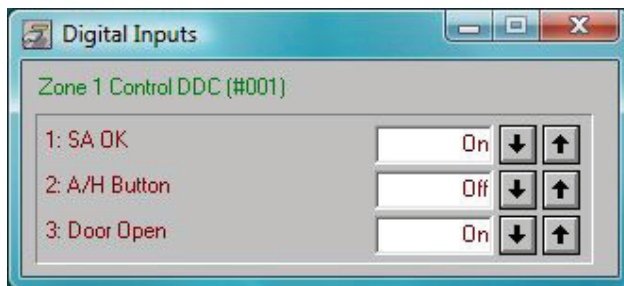
The virtual Genesis II Controller can be powered on, configured and interrogated in the same way as a physical device. Configurations can be downloaded and checked without requiring any hardware installation.

*Gen2 Simulator* can be used in conjunction with any product from the Genesis Software range.



### Applications

- Designing and testing configurations within a Windows environment



### Features

- Genesis II Digital Controller front panel simulation
- Simulation of Genesis II Direct Digital Controller or Genesis II Mid Points Controller processing
- I/O monitoring and control
- Transparent support for all Innotech software packages
- Panel label display reflects configuration
- Easy to use interface - no special training required

### Specifications

- Distributed on one CD
- Is supported by Windows® Vista Business 32-bit & XP Professional 32-bit
- Minimum PC specifications:  
Intel® Pentium® III/500MHz or compatible CPU. 256 megabytes (MB) of RAM. 100 megabytes (MB) of available hard disk space. Video adapter and monitor. CD-ROM or DVD drive. Keyboard and Microsoft® Mouse or compatible pointing device
- Uses *Innotech iComm Server* to access devices
- Requires customer registration on installation
- Upgrade versions available on request

This page intentionally left blank.