



Supervisor Plus

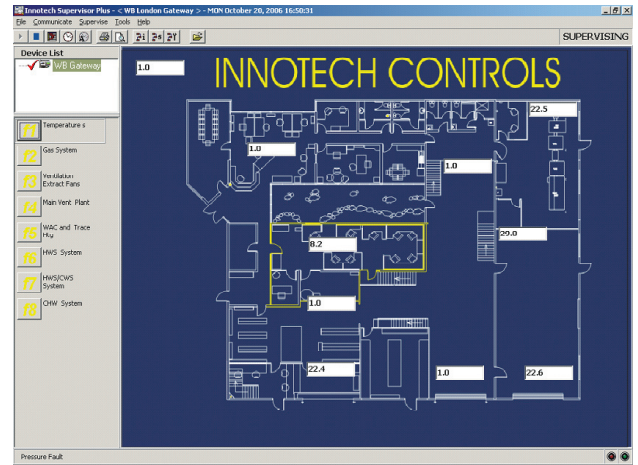
Advanced Monitoring Utility for the
Genesis and MAXIM Family Devices

Overview

Supervisor Plus is a specialised dynamic monitoring utility for the Genesis and MAXIM family devices. It provides all the functionality that is available from the device display panel with greater ease-of-use and flexibility. It is aimed at those users who require some feedback or control of the system, but have no desire to be immersed in the technical details of the configuration.

Supervisor Plus is a user-oriented product; no specialised knowledge of either the Genesis or MAXIM systems are required for its use. It allows the user to view the values of points of interest on a device, change its schedule information, or modify values accessible to the user.

Supervisor Plus allows the user to change the way the 'watch' items are displayed. Information is then presented in a more personalised and easily understood manner. The user can set background images, arrange the watch items around the page and customise the fonts used.



Applications

- Monitoring values and points on either a Genesis or MAXIM family device
- Modifying daily, weekly or yearly schedules on a device
- Modifying values accessible to the user (e.g. set points, timers, etc.)
- Monitoring alarm conditions on a device
- Customising the display of watch values
- Network testing of a device network
- Modifying the date and time on a device
- Monitoring daylight savings parameters on a device

Specifications

- Distributed on one CD
- Is supported by Windows® Vista Business 32-bit & XP Professional 32-bit
- Minimum PC Specifications:
Intel® Pentium® III/500MHz or compatible CPU. 256 megabytes (MB) of RAM. 100 megabytes (MB) of available hard disk space. Video adapter and monitor. CD-ROM or DVD drive. Keyboard and Microsoft® Mouse or compatible pointing device
- Uses *Innotech® iComm Server* to access devices

Features

- 'Watch' value status and modification
- Daily schedule viewing and modification
- Weekly schedule viewing and modification
- Yearly (exception) schedule viewing and modification
- Change date and time
- Change daylight savings parameters
- View of Genesis or MAXIM family device *flash* page
- Basic alarm notification via pop up window
- User-level security
- Full support for dial-in remote access via a modem or network connection
- Uses disk caching to speed up transfers to and from the Genesis or MAXIM family device
- Some user configuration is available, but no programming is required as information is preconfigured on a device or controller
- Easy to use interface, no special training required
- Comprehensive on-line help and user documentation

Watch Page Supervision

When a configuration is initially setup using either *Gen2Config* or *MAXCon*, an output node of any block can have a ‘watch’ value attached, displaying the current value of the block’s output node. In most cases this will be a read-only status value informing the user about data like sensor readings or the status of equipment. These values are continually updated while you use *Supervisor Plus*. ‘Watch’ values may also be attached to user variable blocks, meaning the user can *modify* values, which are then sent immediately to the device for processing. This is very useful for adjusting values like temperature setpoints, or for controlling machinery attached to a device.

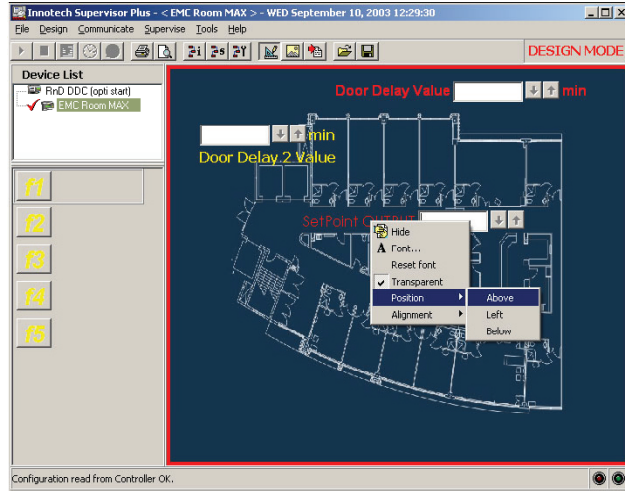
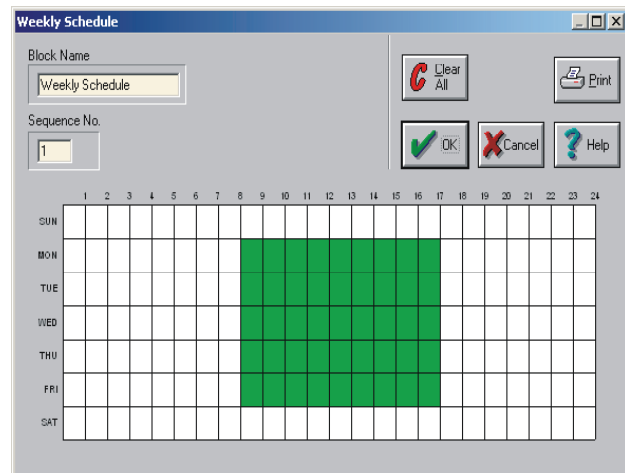
Please refer to the table below for limits on the number of ‘watch’ pages and ‘watch’ items available on different devices.

Controller	Watch Pages			
	Version	Pages	Watches Per Page	Flash Page
Genesis II	6.00 or Greater	8	32	32
Genesis II	Pre Version 6.00	8	16	16
Maxim III	All	8	10	10
Maxim II	All	5	5	5
Maxim I	All	5	5	5
MiniMAX MM01	All	5	5	5
MiniMAX MM02	All	5	5	5
VAVMax	All	5	5	5
MicroMAX	All	5	5	5
IG01 Sub System Gateway	All	5	5	5

Supervisor Plus allows a background image to be placed on each ‘watch’ page, and the ‘watch’ items to be positioned around the page. Information can now be displayed in a manner you choose. If, as in the image to the top right, your watch items are for set points in different areas of an office, you can use a simple floor plan to represent the office, and locate each set point in the right area!

Schedule Supervision

Many configurations include daily, weekly or yearly schedule blocks that periodically require review and modification. The *Schedule Supervisor* provides a graphical representation of each of the schedules, which makes them very easy to read and maintain. Modifying or adding new schedules is simple with *Supervisor Plus*, the same techniques for managing schedules with *Gen2Config* or *MAXCon* is used with *Supervisor Plus*.

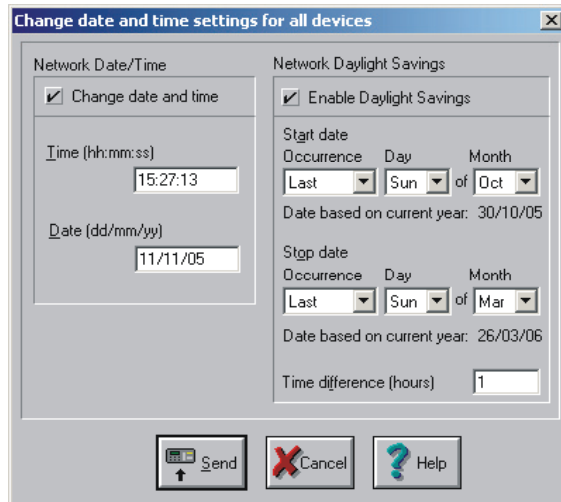


Changing the Date and Time Settings

The settings on the device relating to the date and time can be modified. These settings include:

- The device’s date and time
- The device’s daylight savings information

Note that the date/time and daylight savings settings can be changed on all devices on the network at once.



Alarms

Supervisor Plus provides easy alarm monitoring, alerting you to any active alarm by displaying a popup window. The popup window will flash and beep to attract your attention. If there are some alarms you do not wish to be alerted to in this manner, you can choose to disable pop-up alerts and sound for individual alarms. All alarm messages are shown in the status bar for each device currently monitored.

