



Supervisor

Monitoring Utility for the Genesis and MAXIM Family Devices

Overview

Supervisor is a specialised dynamic monitoring utility for the Genesis and MAXIM family devices. It provides all the functionality that is available from the device display panel with greater ease-of-use and flexibility. It is aimed at those users who require some feedback or control of the system, but have no desire to be immersed in the technical details of the configuration.

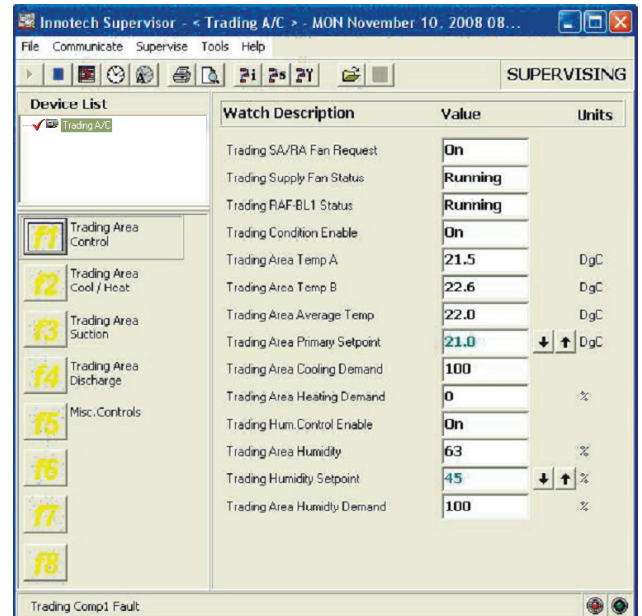
Supervisor is a user-oriented product; no specialised knowledge of either the Genesis or MAXIM systems are required for its use. It allows the user to view the values of points of interest on a device, change its schedule information, or modify values accessible to the user.

Applications

- Monitoring values and points on either a Genesis or MAXIM family device
- Modifying daily, weekly or yearly schedules on a device
- Modifying values accessible to the user (e.g. set points, timers, etc.)
- Monitoring alarm conditions on a device
- Network testing of a device network
- Modifying the date and time on a device
- Monitoring daylight savings parameters on a device

Specifications

- Distributed on one CD
- Is supported by Windows® Vista Business 32-bit & XP Professional 32-bit
- Minimum PC specifications:
Intel® Pentium® III/500MHz or compatible CPU. 256 megabytes (MB) of RAM. 100 megabytes (MB) of available hard disk space. Video adapter and monitor. CD-ROM or DVD drive. Keyboard and Microsoft® Mouse or compatible pointing device
- Uses *Innotech® iComm Server* to access devices



Features

- Watch value status and modification
- Daily schedule viewing and modification
- Weekly schedule viewing and modification
- Yearly (exception) schedule viewing and modification
- Change date and time
- Change daylight savings parameters
- View of Genesis and MAXIM family device *flash* page
- Basic alarm notification displayed on the bottom task bar
- User-level security
- Full support for dial-in remote access via a modem or network connection
- Uses disk caching to speed up transfers to and from the Genesis or MAXIM family device
- No programming required, use information preconfigured on a device
- Easy to use interface - no special training required
- Comprehensive on-line help and user documentation

Watch Page Supervision

When a configuration is initially setup using either *Gen2Config* or *MAXCon*, an output node of any block can have a 'watch' value attached. This displays the current value of the block's output node. In most cases this will be a read-only status value, informing the user about data like sensor readings or the status of equipment. These values are continually updated whilst you use Supervisor. 'Watch' values may also be attached to user variable blocks which means the user can *modify* values which are then sent immediately to the device for processing. This is very useful for adjusting values like temperature setpoints, or for controlling machinery attached to a device.

'Watch' values can be grouped on different watch pages according to function. For a Genesis II Digital Controller this includes a facility for restricting user access to certain watch pages.

Please refer to the table below for limits on the number of 'watch' pages and 'watch' items available on different devices.

Controller	Watch Pages			
	Version	Pages	Watches Per Page	Flash Page
Genesis II	6.00 or Greater	8	32	32
Genesis II	Pre Version 6.00	8	16	16
Maxim III	All	8	10	10
Maxim II	All	5	5	5
Maxim I	All	5	5	5
MiniMAX MM01	All	5	5	5
MiniMAX MM02	All	5	5	5
VAVMax	All	5	5	5
MicroMAX	All	5	5	5
IG01 Sub System Gateway	All	5	5	5

Schedule Supervision

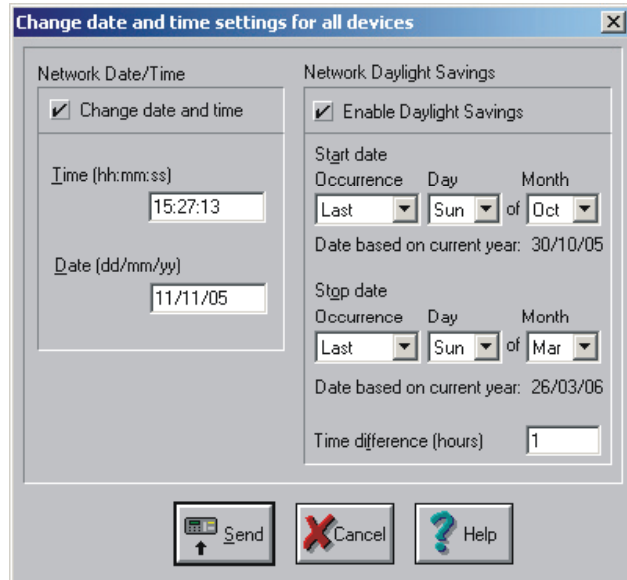
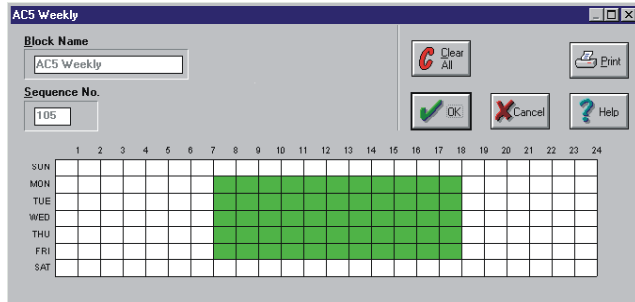
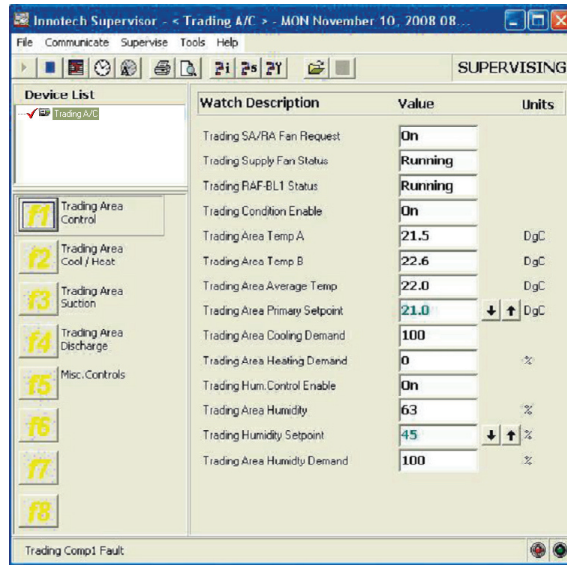
Many configurations include daily, weekly or yearly schedule blocks that periodically require review and modification. The *Schedule Supervisor* provides a graphical representation of each of the schedules, which makes them very easy to read and maintain. Modifying or adding new schedules is made simple with *Supervisor*, the same techniques for managing schedules with *Gen2Config* or *MAXCon* is used with Supervisor.

Changing the Date and Time Settings

The settings on the controller relating to the date and time can be modified. These settings include:

- The device's date and time
- The device's daylight savings information

Note that the date/time and daylight savings settings can be changed on all devices on the network at once.



Australian Owned, Designed & Manufactured
 by Mass Electronics Brisbane

Phone: + 61 7 3841 1388 Fax: + 61 7 3841 1644
 Email: sales@innotech.com.au www.innotech.com.au

YOUR DISTRIBUTOR