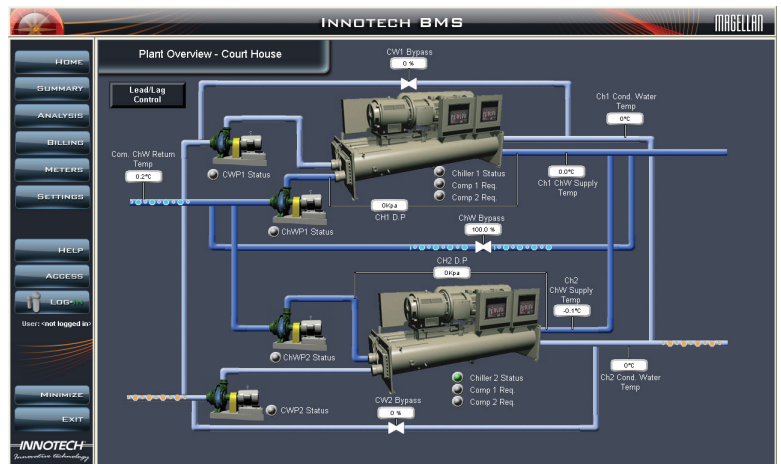


Overview

eServer is a web-based Magellan Explorer solution that allows remote PCs to display a Magellan Explorer interface from within their web browser, while accessing information on a remote PC.

In conjunction with a client-side downloaded ActiveX control plug-in, *eServer* allows remote clients using a web browser to download and display frames of a Magellan project without needing a local copy of that project.



Specifications

- Distributed on CD with an electronic security key for software protection
- Is supported by Windows® Vista Business 32-bit & XP Professional 32-bit
- Minimum PC specifications:
Intel® Pentium® III/500MHz or compatible CPU. 256 megabytes (MB) of RAM. 100 megabytes (MB) of available hard disk space. Video adapter and monitor. CD-ROM or DVD drive. Keyboard and Microsoft® Mouse or compatible pointing device.
- Requires firewall access to *eServer* port 20001, on *eServer* PC
- Requires firewall access to *iComm* on port 20000 on *iComm* Server PCs
- Does not support Magellan projects that interact with OPC devices
- Shipped with *iComm*, *MagellanX* ActiveX control and sample web-page

Features

- eServer* is bundled with the **MagellanX** ActiveX control required for download onto client web pages, offers the following advantages over an independently-run Magellan Explorer program:
- Users do not need to have a licence for Magellan Explorer on their PC – they simply log on to a website which automatically downloads the **MagellanX** ActiveX control and starts a session with a remote *eServer*
 - Only one copy of the Magellan project file (.mag) needs to be stored and maintained on the server
 - All audit logging is carried out on the server PC giving a centralized audit trail repository
 - The interface presented with **MagellanX** is no different to using the Magellan Explorer program itself
 - Updates to the master project file are automatically recognised by the clients next time they connect to *eServer*
 - Protected with a security key and shipped standard with support for 5 concurrent connections
 - Efficient interaction between client and server ensures that only the required parts of the Magellan project are transferred to the client
 - Client-side caching ensures that graphical images are only transferred if they have not previously been accessed by the client

Architecture

eServer runs continuously on a host PC and is always loaded with a single **Magellan** project created using **Magellan Builder**. *eServer* accepts connections from end-users through their web browser via the **MagellanX** plug-in. As the user navigates through the **Magellan** frames in their web-browser, *eServer* downloads the necessary sections of the project to the **MagellanX** plug-in as required.



The screenshot shows the Innotech eServer application window. It has a menu bar with 'File' and a toolbar with icons for 'Load project', 'Access control', 'Help', and 'Shutdown'. Below the toolbar are tabs for 'General', 'Current client connections', 'Server log', and 'Project audit log'. The 'Current client connections' tab is active, displaying a table with the following data:

Date/Time connected	Source IP address	Source host name	Status	Elapsed time	Bytes Tx	Bytes Rx	Messages
18/01/2005 11:17:54 AM	192.168.1.131	trinh.brisbane.innotech.com.au	Active	26s	77359	111	4
18/01/2005 11:07:30 AM	192.168.1.36	anthony.brisbane.innotech.com.au	Active	11m 11s	77359	177	15
18/01/2005 11:06:04 AM	192.168.1.240	Tony.brisbane.innotech.com.au	Active	12m 17s	9977	78	13
18/01/2005 11:05:01 AM	192.168.1.240		Disconnected	57s	99323	196	7

INNOTECH[®]
Innovative technology

Australian Owned, Designed & Manufactured
by Mass Electronics Brisbane

Phone: + 61 7 3841 1388 Fax: + 61 7 3841 1644
Email: sales@innotech.com.au www.innotech.com.au

© MASS ELECTRONICS Pty Ltd 2005

YOUR DISTRIBUTOR