



Graphical Configuration Utility for the BACnet Gateway

Overview

Fusion is the configuration and mapping utility for programming the Innotech® BACnet Gateway.

Fusion is a Windows® based program providing a user friendly interface for the simple creation of complex mappings between Innotech Points and BACnet Devices and Objects.

Fusion can be used to configure the Innotech BACnet Gateway, which acts as a bridge between the Innotech and BACnet networks.

Features

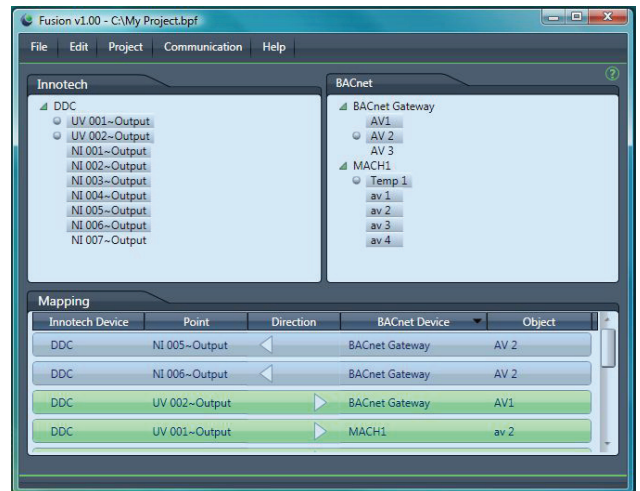
- Simple drag and drop approach to creating mappings between Innotech Points and BACnet Objects
- Visual representation of BACnet Gateway mappings
- Import Innotech Points directly from a Genesis, MAXIM or Fusion project file, or directly from an Innotech network through iComm
- Import BACnet Objects directly from a Fusion project file, or from a BACnet network through iComm

Specifications

- Distributed on one CD as a standalone package
- Is supported by Windows® Vista Business 32-bit and XP Professional 32-bit
- Requires Microsoft® .NET™ Framework 3.5 or greater to be installed
- Upgrade versions available on request

Minimum PC Specifications

- Intel® Pentium® III/500MHz or compatible CPU
- 256 megabytes (MB) of RAM
- 100 megabytes (MB) of available hard disk space
- Video adapter and monitor
- CD-ROM or DVD drive
- Keyboard and Microsoft® mouse or compatible pointing device



Applications

- Internal configuration of the Innotech BACnet Gateway
- Create mappings between Innotech Points and BACnet Devices and Objects

This page intentionally left blank.

INNOTECH[®]

Innovative technology

Australian Owned, Designed & Manufactured
by Mass Electronics Brisbane

Phone: + 61 7 3841 1388 **Fax:** + 61 7 3841 1644

Email: sales@innotech.com.au www.innotech.com.au

YOUR DISTRIBUTOR