



## Communications Server for Innotech® Digital Controllers

### Overview

*iComm* is the communications server used by application software to communicate with Innotech® digital controllers. It supports multiple concurrent applications communicating with multiple servers and device networks. *iComm* is the communications hub of any HMI-integrated device network.

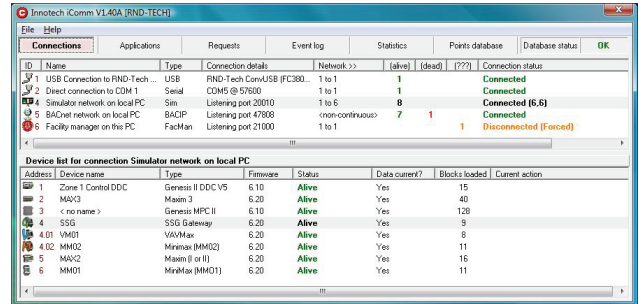
*iComm* supports communication to Innotech devices using a range of communication methods such as Serial, USB, TCP/IP, BACIP or Internal Simulator connections. Additionally, *iComm* supports communication with 3rd party devices through supported protocols, such as BACIP networks.

There is no practical limit to the number of applications that can be simultaneously connected to *iComm*.

*iComm* boasts an impressive diagnostic front screen allowing the user to analyse usage, traffic and communications activity in real-time.

### Features

- Robust and efficient construction using the latest multi-threaded programming techniques
- Multiple concurrent application connections supported
- Multiple concurrent network connections serviced
- Detailed listing of all registered services with accurate status information
- Listing of devices available for a specific connection
- Consolidated listing of requests for values from all applications
- Detailed event log to window or to log file with filters
- Comprehensive on-line help available
- Display of currently-connected applications with their IP address and name
- Statistics page showing bytes of network traffic to and from server
- ActiveX control interface for third-party applications
- Uses 128 bit encryption for login authentication
- Resistant to network hacking, worms or denial of service attacks
- Data values can be logged to a MS Access database
- Logged data values can be graphed directly in *iComm*
- Built-in protocol analysis



### Applications

- All Innotech programs that communicate with Innotech digital controllers require *iComm*.
- Third-party applications can interface with *iComm* via ActiveX control (.ocx) to communicate with Innotech digital controllers.

### Specifications

- Distributed on one CD as a standalone package, or distributed free as part of most Innotech software
- Is supported by Windows® Vista Business 32-bit & XP Professional 32-bit
- Upgrade versions available on request
- Requires TCP/IP support
- Minimum PC specifications:  
Intel® Pentium® III/500MHz or compatible CPU. 256 megabytes (MB) of RAM. 100 megabytes (MB) of available hard disk space. Video adapter and monitor. CD-ROM or DVD drive. Keyboard and Microsoft® Mouse or compatible pointing device

This page intentionally left blank.